

Our New ECO-FRIENDLY Project!



AJITOWER

ECO-FRIENDLY RETAIL & WORK SPACES

ECO FRIENDLY FEATURES :

- Rain Water Harvesting System.
- Indo Air Quality (Proper Daylight & Proper Window Position).
- Auto Sensor Toilet Fixture/best quality fixture.
- Proper Landscaping.

SPECIFICATIONS :

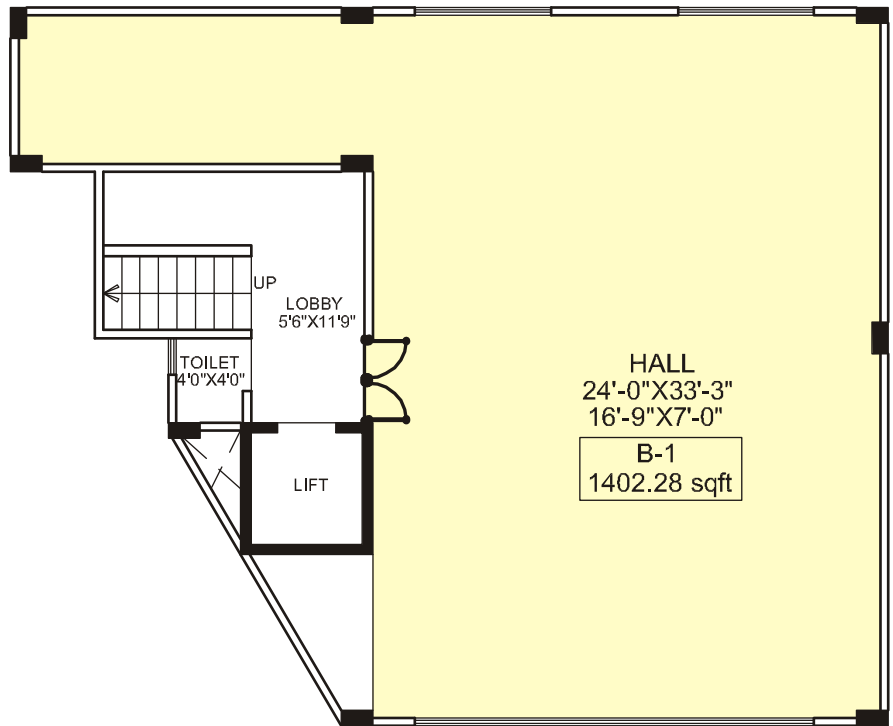
- Imposing entrance, magnificent elevation with glass facade with combination of granite/aluminum composite panel on exterior of building.
- Exclusive designer vitrified tiles / granite flooring.
- Provision for fire fighting.

SALIENT FEATURES :

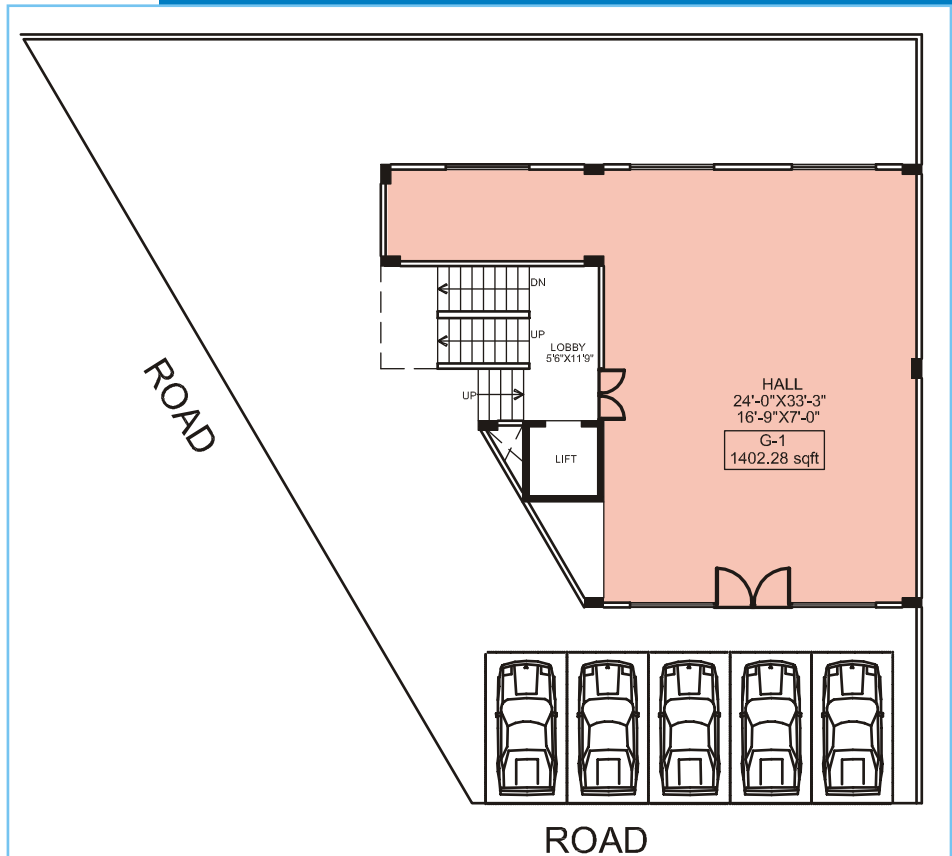
- High speed lift, Ample parking, Elegant glass facade, 100% Power backup for common areas.
- Prime Commercial Location.
- Provision for Alarm System.
- Under Ground and over head water tank for fire fighting and domestic purpose.
- Defined signage and display system.
- Plan providing ample flexibility.
- Earthquake Resistant structural design.

ELECTRICAL WIRING & FITTINGS :

- Total concealed wiring provided with copper conductors.
- AC Provision for all offices.
- Modular electrical switches.
- Provision for CCTV, Campus lighting, Cable networking.

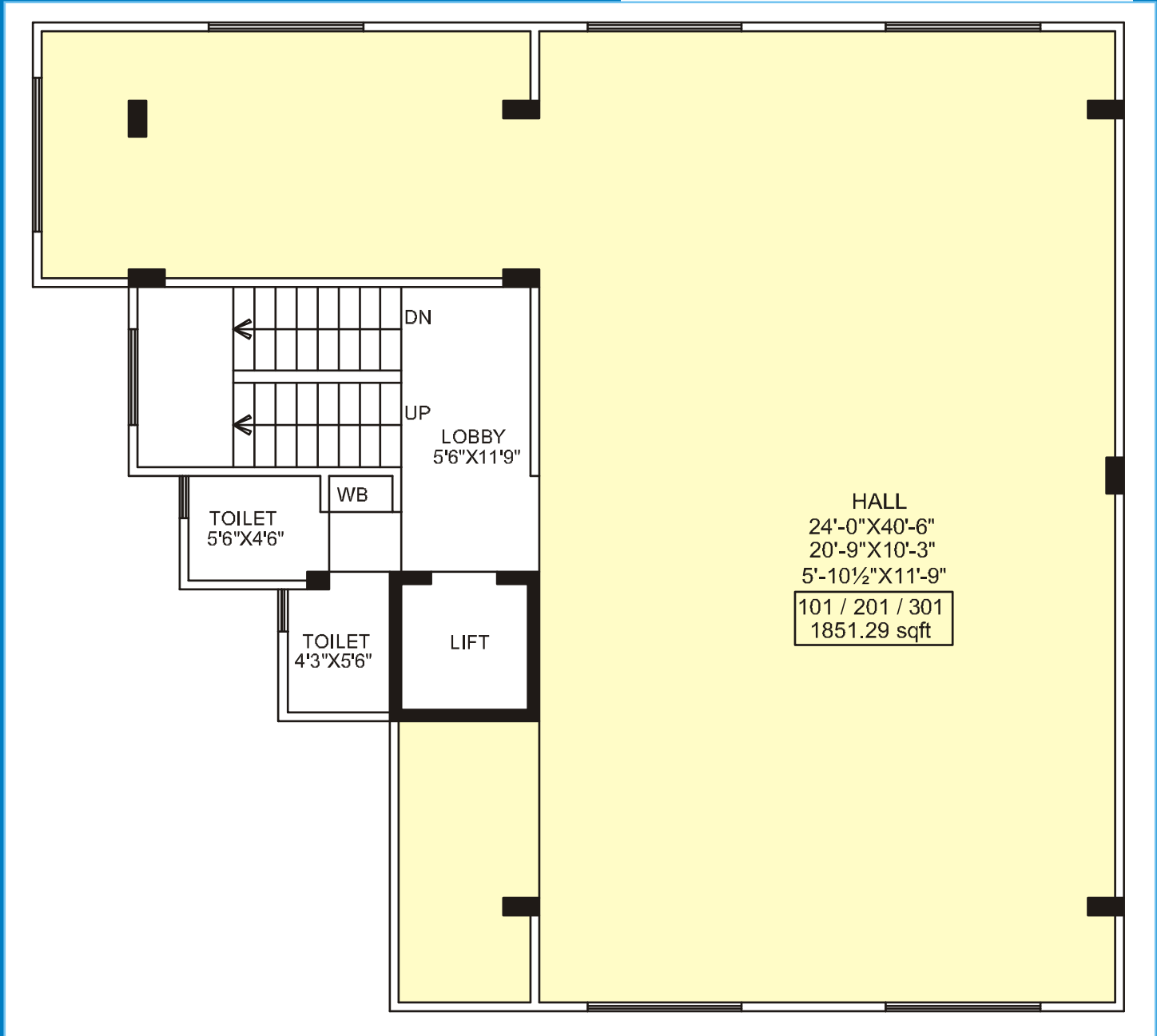


Basement Floor Plan



Ground Floor Plan

B+G+3 Floors



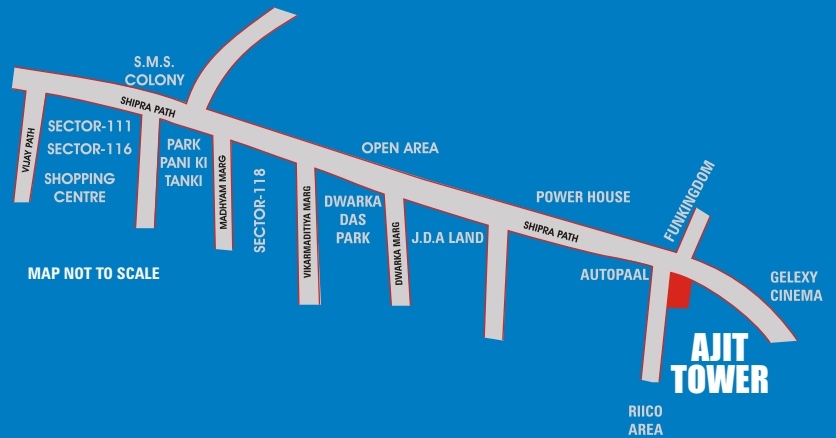
I, II & III Floor Plan



Type	Size (sq. Ft.)
Basement	
Hall	1402.28
Ground Floor	
Hall	1402.28
I, II & III Floor	
Hall	1851.29

AJITOWER

ECO-FRIENDLY RETAIL & WORK SPACES



SITE ADDRESS :
Shipra Path, Mansarovar, Jaipur

LOCATION :

- Proximity to Fun Kingdom
- Proximity to Galaxy Multiplex
- Proximity to Mansarover Industrial Area

Contact :
e-mail : info@ecofriendlyproject.com
website : www.ecofriendlyproject.com