

Location MAP

(map not to scale)



Site Address :

UDB Maverick, Plot No 408-412, Opp. Gyan Vihar University, Pinkcity Enclave, Jagatpura, Jaipur



A Venture of :



UNIQUE DREAM BUILDERS PVT. LTD.

C-116, Janpath, Behind Vidhan Sabha, Jaipur - 302 015, Rajasthan (India)

Telefax : +91 141 4077000 • Email : info@udb.in • website : www.udb.in

sms UDB to 56969

www.udb.in



Your **ADDRESS** for Lifetime.

ash Design Studio 08220061920

Legal Note : The information contained cannot form part of any offer or contract. While every reasonable care has been taken in providing this information, the owner or their agents cannot be held responsible for any inaccuracies. Illustrations shown in the brochure are artist's impressions and serve only to give an approximate idea of the project. All impressions and plans are subjects to amendments as may be required for the betterment of the project allowed within the laws.

“ Finding a
 lifetime of
 joy is quite
 another... ”

Truly majestic, aesthetically designed exteriors very effortlessly extend a hint of what resides beyond. A perfect foreword to and experience. The intrigue gets further heightened when the impeccable planning embodied in that gracious structure surfaces to amaze your being.



project overview

project HIGHLIGHTS

- 108 Premium residential flats
- 1 BHK / 2 BHK / 3 BHK apartments
- Well spacious & Ventilated apartments
- 3 side road around the building.
- 24 Hours water supply
- 100% power backup for Common and essential service areas
- Rain Water harvesting
- 3 nos passenger lifts
- Ample Open / Basement car parking
- Earth quake resistant structure
- 24 Hour Hi-tech security with CCTV
- Wi-Fi Internet Connectivity
- Ecological commitments
- Sewage treatment plant
- Ultra Modern landscapes

exclusive FEATURES

- Impressive lift lobby
- library lounge space
- Fitness Centre / Gym
- Indoor games room like pool table, air hockey
- Basketball Zone
- Cricket Pitch / Net

location ADVANTAGES

- Situated on the prime location at Jagatpura opposite Gyan Vihar University.
- Premium location near by the prestigious Hospitals, Education & Govt. institutions.
- Surrounded by prestigious commercial projects in close vicinity.
- Prestigious learning centres located within a 1km radius.
- 15 min. Drive from Ajmeri Gate / M.I. Road/ Civil Lines.
- 5 Min. drive from Airport.

SPECIFICATIONS

- **Special Feature** : Spacious balcony with each flat, Low maintenance charges, quality lifts.
- **Finishing** : Exclusive designer vitrified flooring in drawing, dining area and bed rooms, POP finish on wall and ceiling with cornices, (Interior : Oil bound distemper / exterior : long lasting weather resistant paint)
- **Wood Work** : Wooden main door, tough ISI mark flush door, brass / chrome hardware, glass windos, weather resistant paint for all doors.
- **Kitchen** : Kitchen counter top in polished granite, 2'-0" tiles DADO above the counter, anti scratch stainless steel sink with hot & cold water mixer.
- **Electrical** : Premium quality switches & accessories, TV/Telephone/ A.C./Cooler point in all rooms at appropriate places, power backup for lift, water pump and common areas.
- **Water Supply System** : 24 Hrs. water supplies
- **Toilet** : Designer ceramic glazed tiles, premium grade C.P. fitting, anti-skid tiles on flooring, branded sanitary ware
- **Security** : Round the clock security, Sound security system.



Ground Floor Plan
with Parking Area & Facilities

1. Shop
2. GYM
3. Indoor Games
4. Multipurpose Hall
5. Lobby & Lifts
6. 1 BHK Flats
7. Parking Area
8. Ramp Down
9. Ramp Up
10. Green area



Area Chart

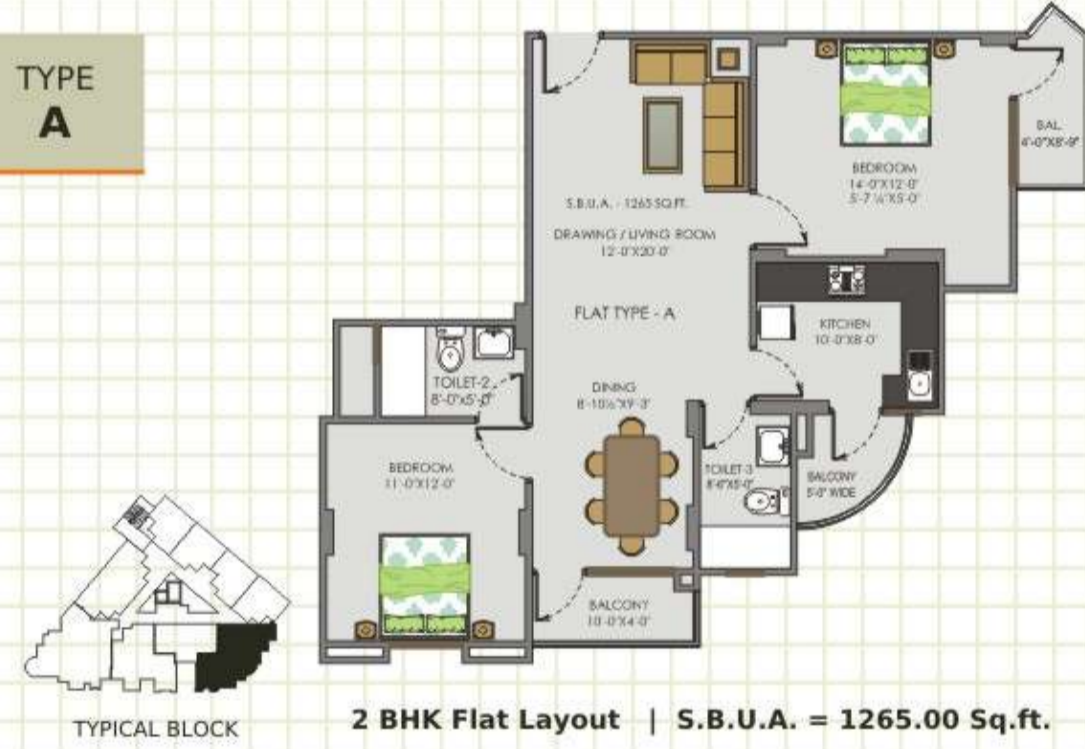
FLAT NO.	G-1	G-2	G-3	G-4	G-5	G-6	SHOP
FLAT	1 BHK	1 BHK	1 BHK	1 BHK	1 BHK	1 BHK	-
SBUA (SQ.FT.)	426.00	426.00	369.00	424.00	424.00	426.00	1273.00

Typical Floor Plan
(1st to 3rd Floor)



	TYPE A	A-1	A-2	B	B-1	C	D	E	F	G
1st to 3rd Floor	2 BHK	1 BHK	3 BHK	2 BHK	3 BHK	3 BHK	2 BHK	1 BHK	1 BHK	1 BHK
FLAT NO.	101-301	102-302	---	103-303	---	104-304	105-305	106-306	107-307/108-308	109-309
SBUA (SQ.FT.)	1265.00	726.00	---	1123.00	---	1714.00	1132.00	570.00	565.00	562.00
4th to 6th Floor	2 BHK	1 BHK	3 BHK	2 BHK	3 BHK	3 BHK	2 BHK	1 BHK	1 BHK	1 BHK
FLAT NO.	401-601	402-602	---	403-603	---	404-604	405-605	406-606	407-607/408-608	409-609
SBUA (SQ.FT.)	1265.00	726.00	---	1123.00	---	1747.00	1132.00	570.00	565.00	562.00
7th & 8th Floor	---	---	701-801	---	702-802	703-803	704-804	705-805	706-806/707-807	708-808
SBUA (SQ.FT.)	---	---	1340.00	---	1497.00	1747.00	1132.00	570.00	565.00	562.00
9th & 11th Floor	---	---	901-1101	---	902-1102	903-1103	904-1104	905-1105	906-1106/907-1107	908-1108
SBUA (SQ.FT.)	---	---	1340.00	---	1497.00	1714.00	1132.00	570.00	565.00	562.00
12th Floor with Terrace Area	---	---	1201	---	1202	1203	1204	1205	1207,1207	1208
SBUA (SQ.FT.)	---	---	2010.00	---	2245.50	2571.00	1698.00	855.00	847.50	843.00

TYPE A



TYPE A-1



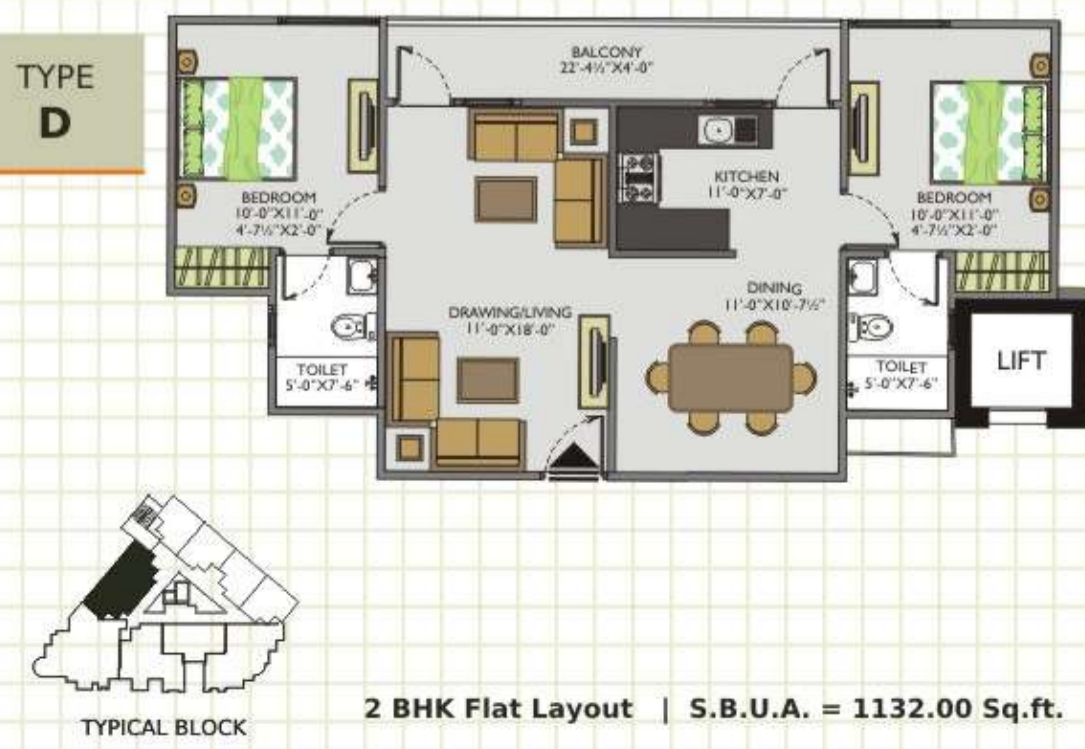
TYPE B



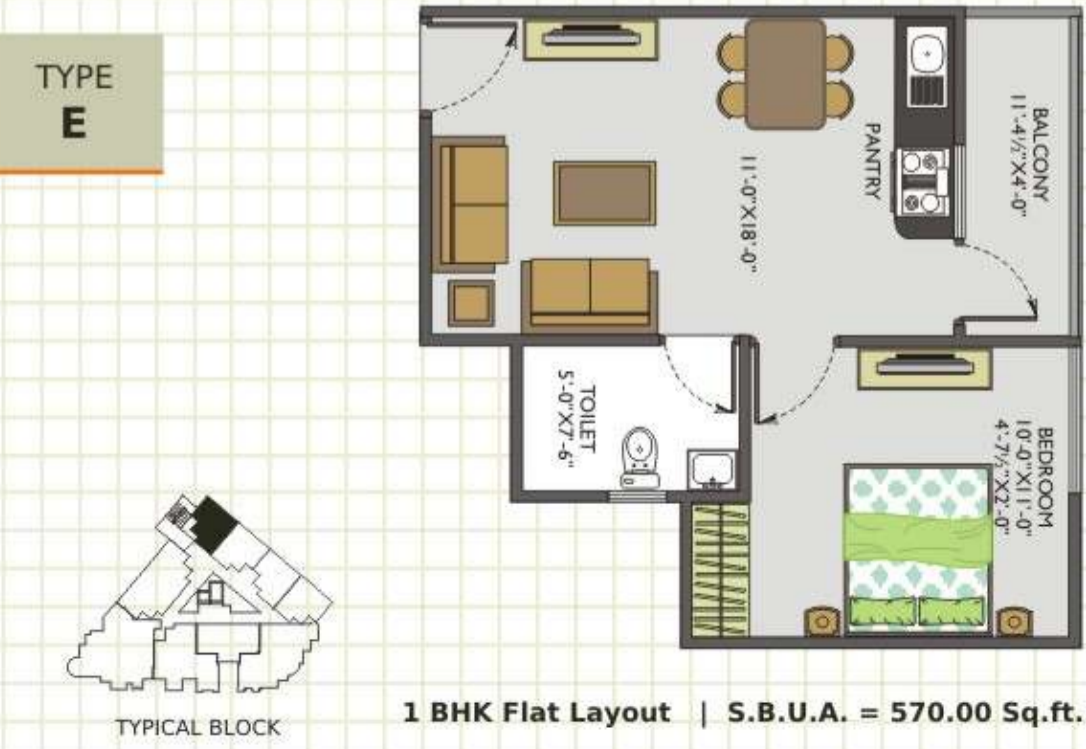
TYPE C



TYPE D



TYPE E



TYPE G



TYPE H

