



UDB
Skyway-I
luxury apartments

Feel high... Live high... in the sky...

A Project by :



UDB Corporate Office :

C-116, Janpath, Behind New Vidhan Sabha,
Lalkothi Scheme, Jaipur - 302015

Tel.: +91 141 4077000 | email : info@udb.in

UDB Corporate Office :

UDB Tower, SB 59, Opp. Jaipur Nagar Nigam,
Tonk Road, Jaipur

Experience the high living...
in the tallest building around.



You stand tall and proud. We have created UDB Skyway - 1 for you. The tallest residential complex at Sikar Road. It promises to become a new landmark. And that way, a home in UDB Skyway - 1 will be one that truly complements your accomplishments.

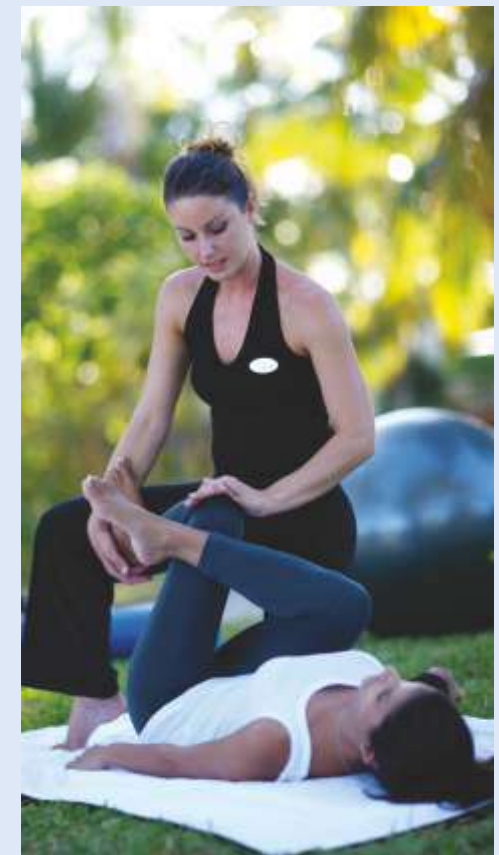


Feel high... live high... in the sky...



Everyone has a view

A magnanimous view in every direction at every floor



UDB Skyway - I is more than breathtaking views & heights. Rather it is about a spectacular visual feast meeting your eyes in every direction, at each floor. At the heart of this necklace-shaped complex is still + 11 storey of a carefully crafted and multi-tiered building. UDB Skyway - I has been intricately designed through an innovative combination of height and width, big balconies, good ventilation. This aesthetic sense of beauty makes its presence felt right from the entrance of the complex.



THE DAY IS NEVER DULL.
WHEN YOU'RE AT THE HEART OF THE CITY,

If you like your days to be action packed, then UDB Skyway-1 will not disappoint you: What's more there are host of educational institutions, hospitals, supermarkets and banks near by. When everything is so conveniently located to your home, your life becomes easy.

UDB skyway-1
luxury apartments



The high life

Live it up



We do not believe in a trade between luxury and space. So to speak you deserve a full package: the lofty heights of the ceilings, luxuriously & spacious homes, king-sized windows, a feeling of openness and above all panoramic view of the outdoor.

Enjoy picture-perfect views of everything around your home with these 3-side open apartments. The sunlight, ventilation and expensive view they offer, creates a feeling of being outdoors from the comfort of the indoors.

The balconies are design to be spacious extensions of your home. Sip your morning tea or evening coffee, stand and take in the view or entertain friends amidst planter boxes on all sides.

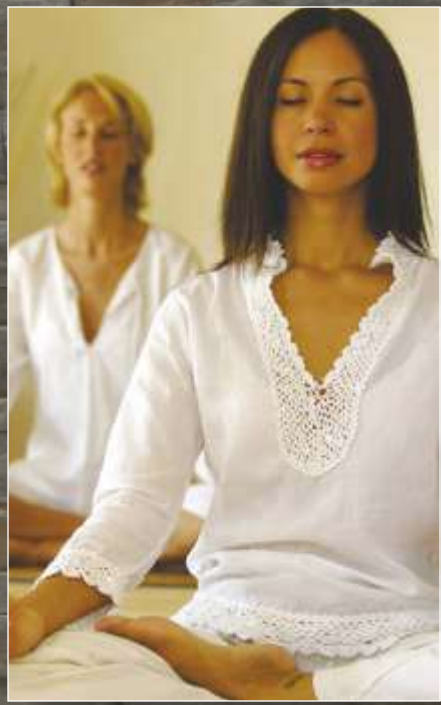


UDB
Skyway - I
luxury apartments



UDB Skyway - I has been modeled as a future home complex with international appeal. Something that caters to the discerning attitudes of today. It's unmatched planning is aptly complimented by efficient space management and exquisite designing. "Such is the combination of aesthetics and the practical".

Little wonder that UDB Skyway - I sets a unique example in comfort and scientific space allocation.



Project Highlights



ECO FRIENDLY FEATURES

Building designed as per eco friendly concept. Big windows for better air & light cross ventilation.



FITNESS & WELLNESS

Well designed health club with gymnasium, steam, sauna, jacuzzi & aerobics



RAIN WATER HARVESTING

Rain water harvesting system to recharge ground water, surface water of the complex is planned to be collected in underground tank and after necessary filtration of sand and suspended matter the water will be recharged into the ground through bore-well



VERTICAL TRANSPORTATION

Two state-of-the-art premium brand elevators for vertical transportation



SECURITY & SAFETY

24 hrs. round the clock security by CCTV cameras and shift wise security guards / efficient & effective fire fighting system as per statutory norms / earthquake resistant RCC frame structure



POWER BACKUP

100 % power backup for common and essential service areas



WATER SUPPLY SYSTEM

The complex has been planned with two tube wells and adequate water storage tank

SPECIAL FEATURES :

Spacious balconies with each flat, low maintenance charges, quality lifts.

FINISHING :

Exclusive designer vitrified flooring in drawing, dining area and bedrooms. POP finish on wall and ceiling with cornices, (interior : Oil bound distemper / exterior : long lasting weather resistant paint)

WOOD WORK :

Wooden main door, tough branded flush door, brass/chrome hardware, glass windows, weather resistant pain for all doors.

KITCHEN :

Modular kitchen with counter top in polished granite, 2 ft. tiles DADO above the counter, anti scratch stainless steel sink with hot & cold water

TOILET :

Designer ceramic glazed tiles, premium grade C.P. fitting, anti-skid tiles on flooring, branded sanitary ware

ELECTRICAL :

Premium quality switches & accessories, TV/Telephone/A.C./Cooler point in all rooms at appropriate places, power back-up for lift, water pump and common essential areas.

Specification & features



Lifestyle, measured in sqft.





SKYWAY GROUP

The Sky Way Group has been standing upfront on the Land of Rajasthan from past many years. The Group has been doing many contributions in the field of Industrial Township, Residential Township and Apartments. The Sky Way Group has up fronted itself as an esteemed organization that comprises of high Professional Values and a dedicated workmanship. These qualities have made the Group deep root its foundation in the whole of Rajasthan.

The Group was founded by Shree M.D. Gupta with the vision to develop the land of Rajasthan, firm and shining. Since then his esteemed guidance has been put into the different ventures of the group.

Having a history of almost 30 years, the command of the Sky Way Group is now under Mr. Sushil Gupta S/O Shree M.D. Gupta. Under his flagship, the Group has grown very high. The Industrial background of Mr. Sushil Gupta has helped him acquire a giant size experience that worked in the favor of Sky Way group. Mr. Sushil Gupta has a rock solid background that had made him stand strong on the land of not just India but Dubai too. From an Industrial Group to the Realty business, the Sky Way Group has come a long way. The innovative ideas, unique business model and an experience of more than three decades have made the group gigantic and the perfect name that can be trusted more than anyone else.

The history of Sky Way Group has touched many milestones and captured many successful projects in India and out of it, and the efforts to grow its geographical dimensions has always been an important part, for the group.

Mr. Sushil Gupta believes in the customer satisfaction, carving the best possible projects along with all the amenities and facilities. In his words, "Sky Way Group has an unmatched quality to give the best to its customers in every way we can. Different projects that Sky Way Group has undertaken are either in the process or have been already completed with finesse. We are continuously in the process of expanding our industry and developing a niche for our work."

Different Industrial parks, townships and apartments have been designed to match the present day scenario. The facilities and efforts that have been put in are based on today's requirements.

The Sky Way Group has developed a land bank of over 500 acres within Rajasthan. The areas that the Group has touched with its fine work are, Reengus, Kaladera, Anantpura and Bagru. Jaisalmer marks the grand initiative of Wind Energy power Plant. Except these, the Sky Way Group is involved in a residential Township in Shree Madhopur and Apartments which are in association with UDB at Murlipura, Sikar Road, Jaipur.

The greatest achievement of Sky Way Group is its association with UDB, another name that shimmers in the same genre. The association is a landmark that would add another star to its profile. This association definitely vouches for some great projects and ideas for the land of Rajasthan.

The uniqueness of Sky Way Group has made it grand in Rajasthan with a promising Future. The group's dedication and true initiatives are to make Rajasthan a better place to live in. The Sky Way Group is here to make Rajasthan a radiant and lustrous state, so that it may mark its place among the ace listers. Rajasthan's Royalty and charm would definitely get a shine with the workmanship of Sky Way Group.



UNIQUE DREAM BUILDERS



UDB (Unique Dream Builders) has become the very definition of success and entrepreneurial finesse. One of the most trusted builders in Rajasthan, UDB has been a renowned name in the construction industry for over 3 decades.

UDB strives to build a better life for its customers by leveraging its core strengths - the 5 Ls of Leadership, Luxury, Lifestyle, Location and Legacy - to create landmarks of exemplary quality and design that benchmark the highest standards of international living. It has more than 45 residential and commercial edifices beautifying Jaipur.

A closer look at the completed and ongoing projects by the company in the last few years, reveal their strong focus on quality and innovation. The residential and commercial projects executed by UDB have been appreciated not just for the foresight and attention to detail, but also for the crisp and clear legal processes and minimum hassle for the customers.

UDB has achieved great feats, being awarded for best performance in the real estate industry in Rajasthan at the IPA awards, ICICI Home Loan Utsav are few among them. And repeating this chapter of success UDB won two prestigious awards in JAIPUR REAL ESTATE AWARDS - 2012 in two categories which are:

CONSUMER CHOICE AWARD FOR HIGHEST SATISFACTION & EXCELLENCE IN DESIGN & SPACE MANAGEMENT - COMMERCIAL

The Group's projects are specifically designed and adorn strategic points with uncompromising construction standards and matchless aesthetic beauty.

QUALITY BEYOND EXCELLENCE | RELATIONSHIP BEYOND BUSINESS | SATISFACTION BEYOND COMPARISONS



Orchid
@ on main 300 ft. jaipur-ajmer expressway, jaipur



Harmony
@ on main 300 ft. jaipur-ajmer expressway, jaipur



Indus
@ near kisan dharam kanta, mansarovar, jaipur



Celebrations
@ near chokhi dhani, main tonk road, jaipur



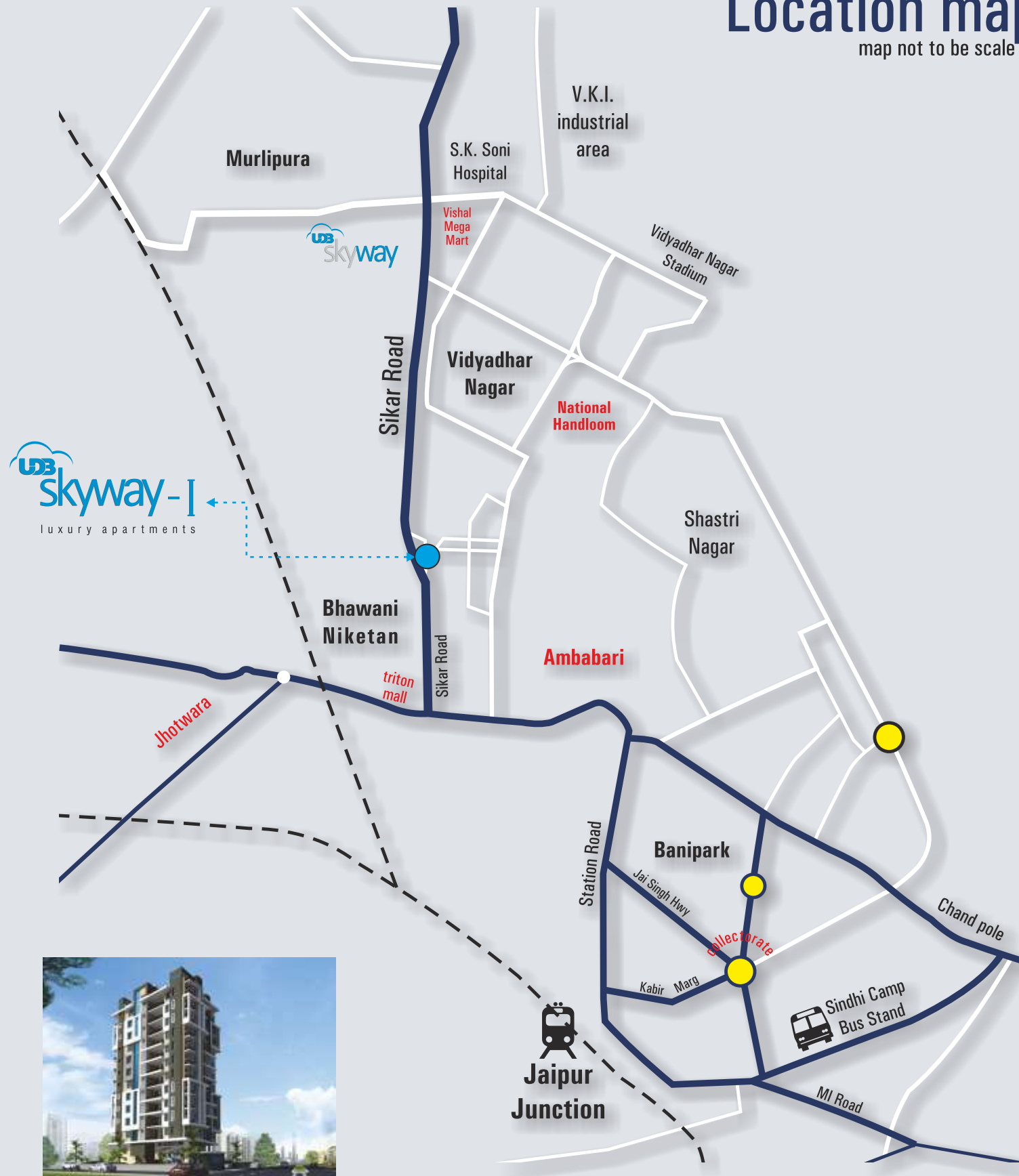
ecoscape
@ patrakar colony, mansarovar, Jaipur



UDB Legend
@ near collectorate, banipark, jaipur

Location map

map not to be scale



Site Address : Opp. Bhawani Niketan Campus, Main Sikar Road, Jaipur



Transportation : Just opp. BRTS bus stop | 5-8 min. drive from Sindhi Camp bus stand and Jaipur junction | 20-25 min. from Airport
 Main utility Market & Entertainment Zone : Walking distance from shopping malls, indoor games zone, multiplex cinemas & ambabari shopping center
 1-2 Km. from National Handloom & Vishal mega mart
 Educational hub : Just opp. Bhawani Niketan School & College | Many reputed colleges, institutes & schools nearby
 Hospitals : 2 Km. from S.K. Soni Hospital & Khetan Hospital | 10 Min. drive from Janana Hospital

skyway-I
 luxury apartments

floor plans