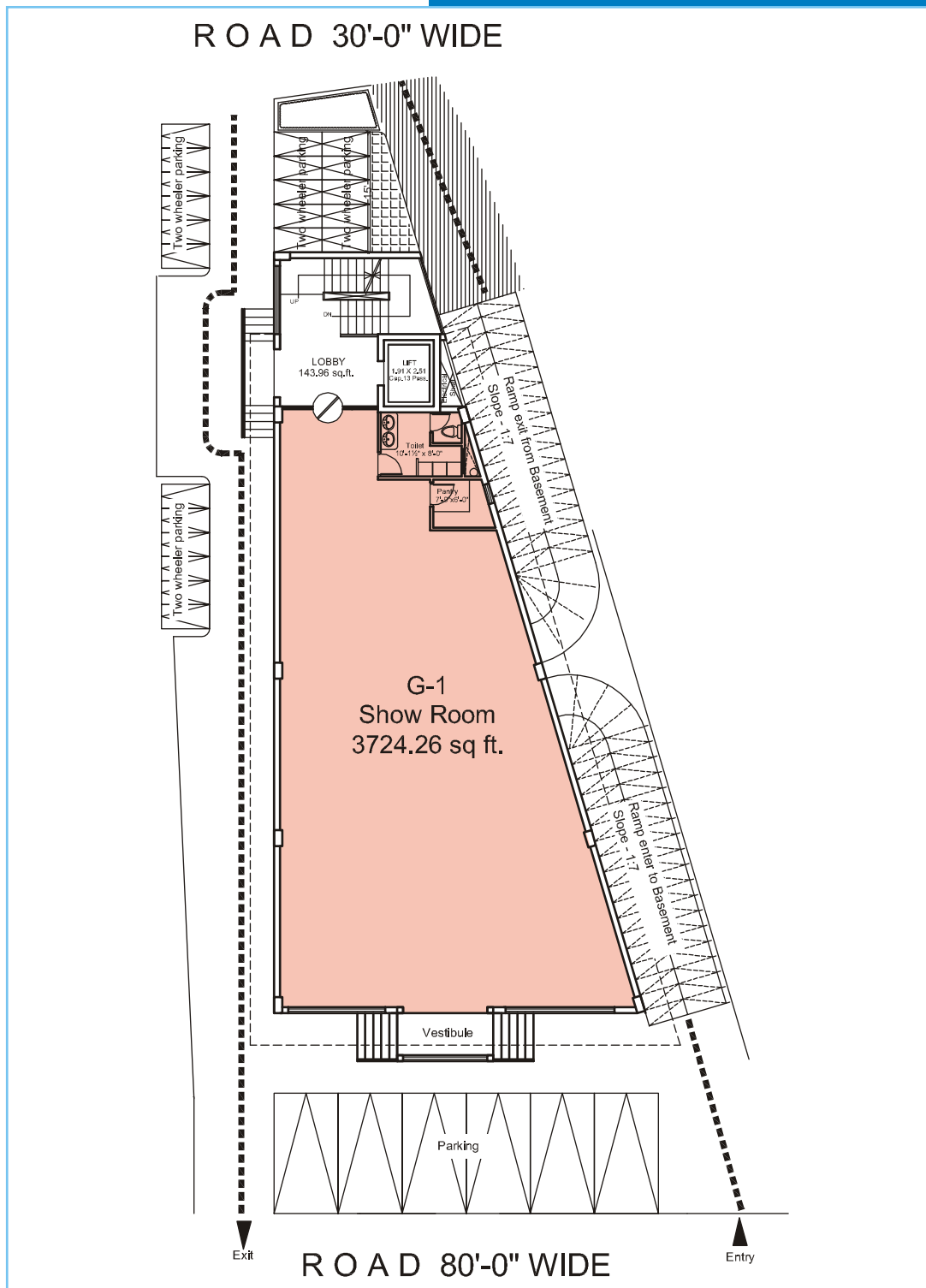


Our New ECO-FRIENDLY Project!



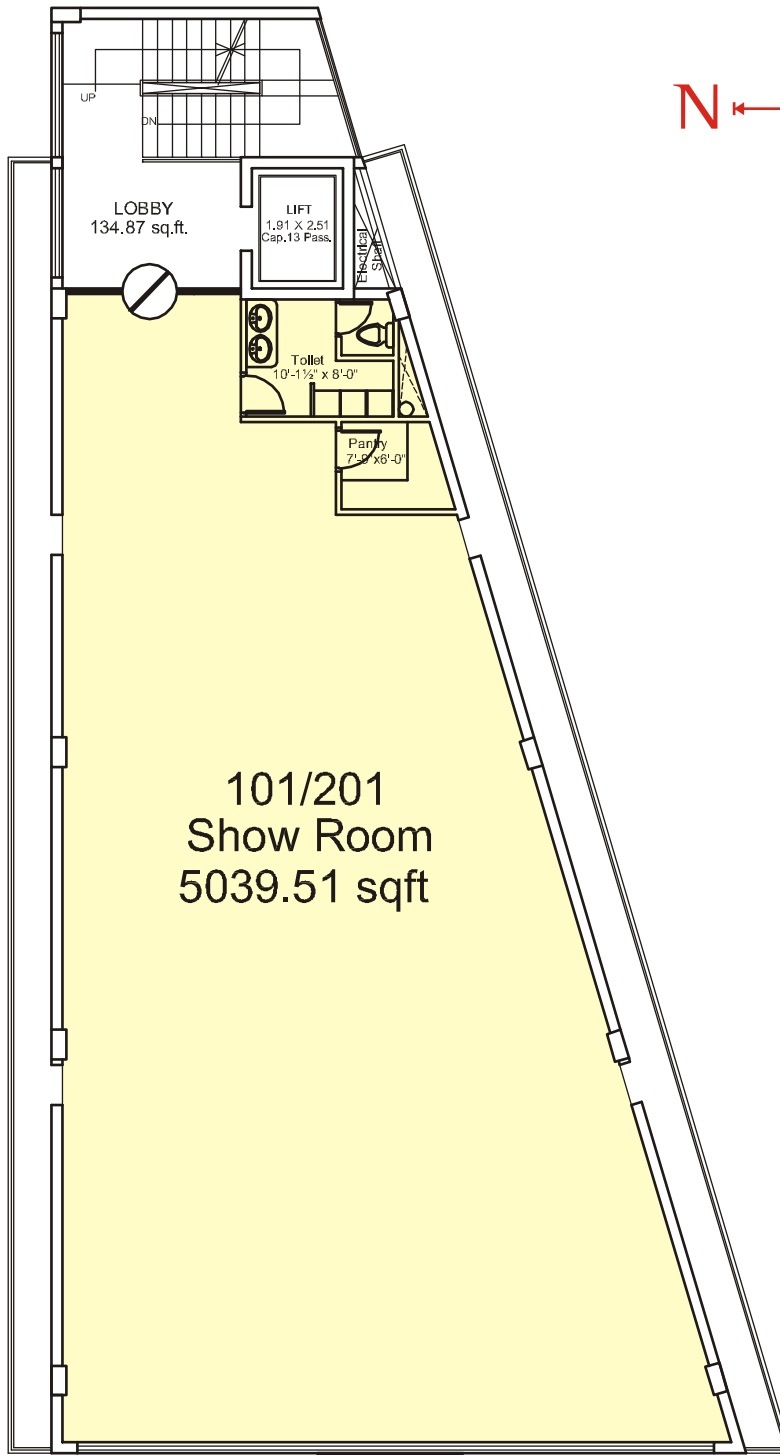
Hallmark
ECO-FRIENDLY RETAIL & WORK SPACES



Ground Floor Plan

ECO FRIENDLY FEATURES : • Rain Water Harvesting System. • Indo Air Quality (Proper Daylight & Proper Window Position). • Auto Sensor Toilet Fixture/best quality fixture. • Proper Landscaping. **SPECIFICATIONS :** • Imposing entrance, magnificent elevation with glass facade with combination of granite/aluminum composite panel on exterior of building. • Exclusive designer vitrified tiles / granite flooring. • Provision for fire fighting. **SALIENT FEATURES :** • High speed lift, Ample parking, Elegant glass facade, 100% Power backup for common areas. • Prime Commercial Location. • Provision for Alarm System. • Under Ground and over head water tank for fire fighting and domestic purpose. • Defined signage and display system. • Plan providing ample flexibility. • Earthquake resistant structural design. **ELECTRICAL WIRING & FITTINGS :** • Total concealed wiring provided with copper conductors. • AC Provision for all offices. • Modular electrical switches. • Provision for CCTV, Campus lighting, Cable networking.

B+G+2 Floors



I & II Floor Plan

	Ground Floor	First Floor	Second Floor	Roof Top Restaurant
Type	Hall	Hall	Hall	Hall
Size (sq. Ft.)	3724.26	5039.51	5039.51	3599.65

Hallmark

ECO-FRIENDLY RETAIL & WORK SPACES



SITE ADDRESS :
Gautam Marg, Vaishali Nagar, Jaipur

- LOCATION :**
- Proximity to Amrapali Circle
 - Proximity to Innox Multiplex
 - 1 km. from MTS Corporate Office

Contact :
e-mail : info@ecofriendlyproject.com
website : www.ecofriendlyproject.com